

# Project Profile: Capital House

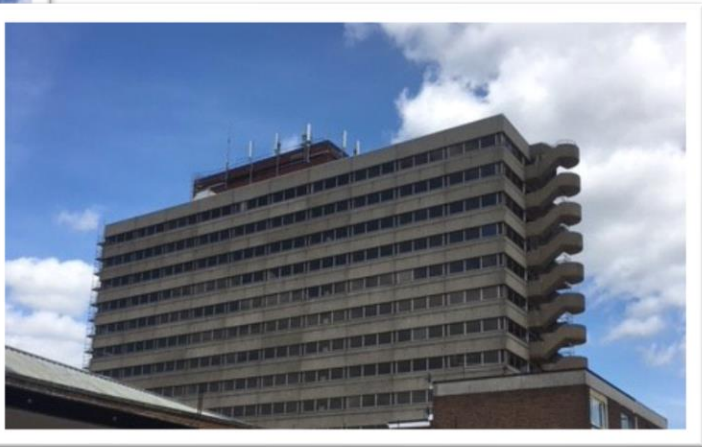
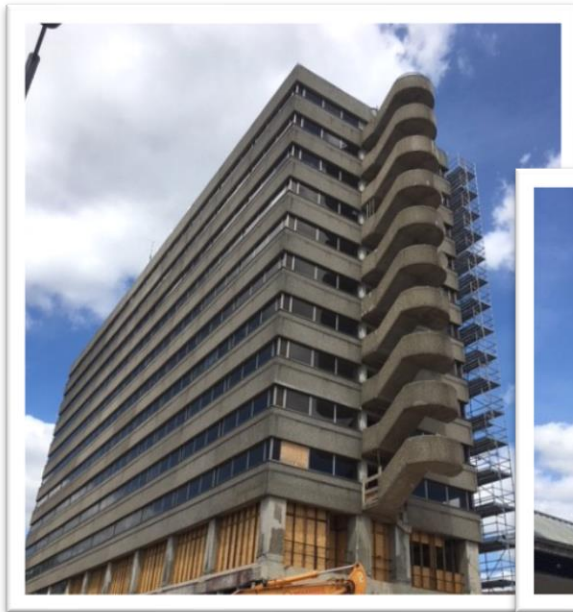
**Project:** Capital House, East Street, Concrete Repairs

**Client:** CRM Students



**The project:** Capital House, a brand-new student accommodation scheme located in East Street, Southampton, was due to open in September 2018 in advance of the new academic year. With various defects identified, **APA Concrete Repairs Ltd** were assigned to complete

external concrete repairs and apply protective coatings to the surrounding elevations of this 13-storey building over the Summer of 2018, prior to the increased student demand for housing accommodation.



**The solution:** All defective pre-cast and reinforced concrete located on the surrounding facades was first cut and broken out before being reinstated with a new, suitable repair mortar. The new concrete was bonded to that of the existing using a cementitious bonding agent, with any exposed reinforcement treated in the process. Following the reinstatement of concrete repairs, multiple layer Keim protective coatings were applied to external precast cladding and exposed in-situ concrete. Resin injection was also undertaken to various cracks identified on the South, East & West elevations. Additional works undertaken included repairs to the redundant vent holes through concrete panels, to surrounding elevations of all levels (750 No.) and the removal and repair of redundant metal fixings (4000 No.). Through the use of a roped access technique, finishing touches were then applied to previously repaired and coated external features.



**The outcome:** The refurbishment was completed in September 2018, just in time for the start of the new academic term. All external defects were closely identified and addressed, allowing for the effective application of protective coatings, which will guarantee prolonged prevention from future deterioration. The use of the specialist roped access technique also allowed for the close attention required in order to provide an aesthetic finish as desired by the client.



**Materials Utilised:**

- Webercem HB40
- Webercem Bondcoat
- Weber Repair Mortar
- Keim Concretal Dilution
- Keim Concretal-Lasur
- Weber Five Star Grout

**For further enquires please contact:**

E-mail: [sales@apaconcreterepairs.co.uk](mailto:sales@apaconcreterepairs.co.uk)

Tel: 01422 379640

**Northern Office**

Black Brook Way  
Greetland  
Halifax  
West Yorkshire  
HX4 8ED  
Telephone: 01422 379 640  
Fax: 01422 374 938

**Southern Office**

Abbey House  
Wellington Way  
Brooklands Business Park  
Weybridge  
London  
KT13 0TT  
Telephone: 0208 853 0627

E-mail: [info@apaconcreterepairs.co.uk](mailto:info@apaconcreterepairs.co.uk)

Web: [www.apaconcreterepairs.co.uk](http://www.apaconcreterepairs.co.uk)

PROFESSIONAL MEMBERSHIPS & ACCREDITATIONS HELD

